

**CREATING OPPORTUNITIES AND TACKLING INEQUALITIES
SCRUTINY COMMITTEE**

**TUESDAY 21 JULY 2009
7.00 PM**

Bourges/Viersen Room - Town Hall

AGENDA

Page No

1. Apologies for absence

2. Declarations of Interest and Whipping Declarations

At this point Members must declare whether they have an interest, whether personal or prejudicial, in any of the items on the agenda. Members must also declare if they are subject to their party group whip in relation to any items under consideration.

3. Minutes

3.1 Children and Lifelong Learning Scrutiny Panel held on 4 March 2009

1 - 6

4. Call In of any Cabinet, Cabinet Member or Key Officer Decisions

The decision notice for each decision will bear the date on which it is published and will specify that the decision may then be implemented on the expiry of 3 working days after the publication of the decision (not including the date of publication), unless a request for call-in of the decision is received from any two Members of a Scrutiny Committee or Scrutiny Commission. If a request for call-in of a decision is received, implementation of the decision remains suspended for consideration by the relevant Scrutiny Committee or Commission.

5. 16 to 18 year olds not in Education, Training or Employment (NEET)

7 - 12

6. Services for Adults and Children with Disabilities

13 - 20

7. Forward Plan of Key Decisions

21 - 34

To consider the latest version of the Forward Plan

8. Work Programme

35 - 36

To agree the current work programme and discuss future items.

9. Date of Next Meeting

Tuesday, 15 September 2009 at 7.00pm



There is an induction hearing loop system available in all meeting rooms. Some of the systems are infra-red operated, if you wish to use this system then please contact Paulina Ford on 01733 452508 as soon as possible.

Committee Members:

Councillors: P Thacker (Chairman), J Wilkinson (Vice-Chairman), S Allen, Y Lowndes, B Saltmarsh and N Khan

Substitutes: Councillors: Z Hussain, C Burton and J R Fox

Further information about this meeting can be obtained from Paulina Ford on telephone 01733 452508 or by email – paulina.ford@peterborough.gov.uk

Emergency Evacuation Procedure

In the event of the fire alarm sounding all persons should vacate the building by way of the nearest escape route and proceed directly to the assembly point in front of the Cathedral. The duty Beadle will assume overall control during any evacuation, however in the unlikely event the Beadle is unavailable, this responsibility will be assumed by the Committee Chair.

**MINUTES OF A MEETING OF THE
CHILDREN & LIFELONG LEARNING SCRUTINY PANEL HELD IN THE
BOURGES & VIERSEN ROOMS, TOWN HALL, PETERBOROUGH**

4 MARCH 2009

Present:	Councillors Walsh (Chairman), C Burton, S Day, Khan, Saltmarsh and Wilkinson	
Co-opted Members:	Frank Smith	Peterborough Diocesan Board of Education
Also present:	Katt King Bryony Pound	Youth Council Representative Youth Council Representative
Officers in Attendance:	John Richards Mel Collins Elaine Fulton Maureen Phillips Debbie Brayshaw Stephen Sutherland Marie Southgate Elaine Lewis Paulina Ford Lindsay Tomlinson	Executive Director, Children's Services Assistant Director, Learning and Skills Assistant Director, Commissioning and Performance Assistant Director, Families and Communities Head of Children's Social Care Head of Strategy and Planning Lawyer Lawyer Performance Scrutiny and Research Officer Senior Governance Officer

1. Apologies

An apology had been received from Councillor Benton. Councillor C Burton attended as substitute.

2. Declarations

There were no declarations.

3. Minutes of the meeting held on 14 January 2009

The minutes of the meeting held on 14 January 2009 were approved.

4. Integrated Children with Disabilities Service and Aiming High for Disabled Children

Integrating services for disabled children provided by health and the different divisions within children's services was part of the 'Every Child Matters' agenda to ensure that children and families received a co-ordinated assessment of need and appropriate services to meet those needs.

The aim of the project was to develop and implement an integrated service for children with disabilities across health, social care and education services by May 2009 and comprised the following key elements: -

- To integrate processes, policies and procedures
- To introduce a single assessment and referral process

- To provide improved service pathways
- To increase the amount of preventative services
- To create an accurate database of all children with a disability
- To develop joint planning processes
- To develop short break provision taking into account the Department for Children Schools and Families and Department of Health Aiming High implementation guidance
- To provide quality information to children and young people, parents and carers on all of the services available to them
- To ensure that children with disabilities were high on both operational and strategic agendas across children's services and organisations
- To increase the engagement and involvement of children and young people, their parents and carers

Eligibility for the Aiming High Short Breaks programme was targeted at those children and young people who were in receipt of higher level disability living allowance (DDA) and/or mobility allowance. Nationally this would equate to 1.2% of the 0-19 population; information from the Department for Work and Pensions (DWP) stated that 764 children and young people were in receipt of DDA in Peterborough and therefore this equated to 1.9% of the 0-19 population. Within the project there were 18 key deliverables which were all on target up to 31st December 2008. The complexity of budgets for disabled children within health had resulted in substantial delays in moving forward with pooled budgets and developing further integration plans. However, the project aims remained undiminished and every effort was being made to bring it back on track with the urgent appointment of an interim project manager who would be replaced by the permanent appointment of a service manager for the new service within 6 months.

There were three key elements to the proposals to deliver Aiming High, all of which were based on key information from consultation with parents and which would be presented to those parents attending the Parents' Forums during March 09 for further debate. The core offer involved publishing eligibility criteria and being transparent about how decisions were made to allocate services according to need. The full service offer involved expanding existing short break provision using Aiming High funding, and the guidance associated with allocation of the grant made it quite clear that both capital and revenue grants must be spent on developing a broader range of services with the aim of 'securing short breaks for severely disabled children'.

The focus of the commissioning strategy was therefore to build on existing services to expand on what was on offer, providing greater flexibility and choice and to bridge gaps in existing services identified by parents and carers.

Observations and questions were raised and discussed including:

- When will the staffing issues be resolved?
- We are due to interview next week and the intention is to have a small team responsible for the project rather than one person up until the time a new team leader is appointed.
- When will the correct data be available?
- We won't be happy with the data until we have an integrated case management system. We are currently improving processes to encourage registration and we are confident we will get close to an accurate picture.
- What is the life span of the project?
- The project is to put in place permanent management arrangements to make the service fully integrated.
- Do the authority and the PCT need to match fund the government funding?

- The authority is not providing any additional monies; the PCT is match funding.

ACTION AGREED

The Panel noted the report.

5. The Annual Review of Peterborough's Children and Young People Plan

Peterborough's first statutory Children and Young People Plan (CYPP) had been published in April 2006. The three-year rolling plan had undergone two subsequent reviews and had been approved by the Children's Trust, Full Council and PCT Board in April of each year.

The overview document that outlined the vision and key priorities for children and young people in Peterborough was to be submitted for approval by Full Council in April 2009. An Annual Report, setting out progress against the 2008 CYPP, and a full Needs Assessment were due to be published in July 2009, to allow for the inclusion of end-of-year performance outturns.

The 2008 Children and Young People Plan had outlined the following vision:

"Our vision is simple: to create an environment where children and young people are safe and healthy, can enjoy what life has to offer and have ambition and aspirations, where they achieve their goals and make a positive contribution for themselves, their family and their community".

The 2008 CYPP outlined ten broad priorities, each of which had a number of key areas of focus. It was not proposed to change the ten priorities in the 2009 Children and Young People Plan. However, it was proposed that the key areas of focus be reviewed and updated to meet current needs. It was also proposed that there be an additional priority related to the key strategic enablers that needed to be put in place to deliver improved outcomes in Children's Services.

Observations and questions were raised and discussed including:

- How are you raising aspirations?
- The Children's Trust has 5 outcome partnerships, one of them being the "Enjoy and Achieve" Partnership which has been identified as a key focus. Any thoughts and ideas from members would be welcomed.
- How are you narrowing the achievement gap within the Pakistani community?
- We have a national programme around narrowing the gap. We have materials we use with schools and targeted programmes for groups in schools. We have seen improvement in the outcomes for children from the Pakistani community across all key stages. Information will be circulated to members. We have undertaken wider work through children's centres and extended schools – early intervention and support for families has been shown to be very effective.
- What support mechanisms are there for voluntary groups working during the evenings, for example after school clubs?
- We have a contract with the voluntary sector umbrella body for the delivery of services, training, CRB checks etc. Individual organisations went through a competitive tendering process to apply for funding to deliver specific areas of work, focussed on the CYPP priorities.

ACTION AGREED

The Panel noted the report.

6. Post Haringey Review of Safeguarding – the Effectiveness of Safeguarding Arrangements in Peterborough

Following the publication of a Serious Case Review [SCR] in respect of Baby P in Haringey, a Joint Area Review [JAR] of safeguarding arrangements in that authority had been undertaken at the end of November 2008. Its findings had prompted the Secretary of State to request that all “ *Local Authorities, with their partners take stock of the effectiveness of safeguarding practices in their own areas*”.

The Panel received details of the action plan of Children’s Services to undertake an assessment of its arrangements against the findings and recommendations of the Haringey JAR. In addition Local Authorities had been requested to Review Serious Case Reviews judged inadequate by Ofsted.

Immediately post-Haringey, the position of Head of Social Care reporting into a larger Family and Communities division was reviewed. To give safeguarding and social care a higher profile with direct accountability to the Director, the Head of Social Care had been designated a full member of the Departmental Management Team. In addition, within the developing Children’s Trust Partnership Board (CTPB) structure, the Staying Safe Partnership Group would ensure leadership within the trust of the Staying Safe Action Plan and would strengthen links between the CTPB and the Local Safeguarding Children’s Board.

A review of safeguarding within social care had been conducted and one area for immediate action had been identified in relation to improving the quality of strategy meetings. Work was ongoing to improve the quality of assessments, developing a best practice model, and a new audit programme was being developed to reflect the issues discovered in Haringey and ensure the council remain compliant with the recommendations of the Climbié Inquiry of 2003.

The vacancy rate of qualified social workers within the authority was 12%. Reliance on agency staff had been reduced to a minimum. The additional work to review the two serious case reviews deemed inadequate had been completed and all necessary changes to procedures had already been implemented.

Observations and questions were raised and discussed including:

- This is a very complex issue. Members are often involved in individual cases and it can be difficult to get information – the problem of secrecy needs to be rectified.
- We hope there is no secrecy with the families concerned. We need to look at how we can best share information with members – it may be that information is withheld as it forms evidence. Officers will look at possible solutions; it may be that we can introduce a policy of telling members why information cannot be given.

ACTION AGREED

The Panel endorsed the report.

7. The Youth Crime Action Plan

The Youth Crime Action Plan, launched on 15th July 2008, was a cross-government initiative involving the Home Office, Ministry of Justice and Department for Children, Schools and Families. It aimed to get young people off the streets late at night, provide intensive support for the most problematic families and tougher, more visible ‘community payback’ sentences for young people who offend. At its heart, the plan was driven by the following three principles:-

- Enforcement and punishment
- Non-negotiable support
- Better and earlier prevention

The national Youth Crime Action Plan built on progress already made since the instigation of youth offending teams in 2000. The action plan highlighted a number of developments which had had a positive impact on youth crime reduction.

However, whilst the volume crime had gone down, the level of youth crime self-reported by young people remained static. There was understandable public concern about violence, use of weapons and gang related offending nationally. The plan identified the scope to improve local co-ordination and accountability and to focus on early intervention and prevention by focusing on the underlying causes of offending and the family circumstances associated with youth offending.

The key headlines relating to the reduction of youth crime nationally were as follows:

- Personal crime was down by 40% and violent crime down by 41% since 1995;
- Programmes such as 'Tackling Gangs Action Programme' had made real differences;
- There had been a significant investment in prevention, family support and the early years provision;
- Children's centres were increasingly targeting vulnerable families;
- Extended schools were offering a variety of co-located services for children, families and young people;
- There had been substantial investment in positive activities for young people at risk of offending and poor outcomes generally;
- The Youth Justice Board had developed a range of targeted intervention programmes

The Youth Crime Action plan analysed current progress in tackling youth crime and identified promising schemes piloted or implemented successfully in certain areas. Authorities granted YCAP money were required to implement services from a specified menu of projects and interventions designed to reduce youth crime. Peterborough was one of 69 local authorities qualifying for an YCAP grant of £790,000 over the following three years. Qualification was based on a needs analysis, around levels of social deprivation, disadvantage and offending levels.

After school 'sweeps' were taking place 3 times a week across Peterborough. Using uniformed police officers and police community safety officers, young people engaging in antisocial behaviour after school were picked up and returned to their parents. Early intervention of this nature had been found to prevent more serious problems occurring in the majority of cases.

Observations and questions were raised and discussed including:

- On what basis are schools chosen for after school police patrols?
- This is part of the safer schools initiative – it has proven so successful that all schools want to be involved. We will be introducing it into all areas.

ACTION AGREED

The Panel noted the report.

8. Feedback and Update Report

The Panel received updates on the following:

- Recruitment and Retention in Schools
- Children's Trust – Overview of performance

ACTION AGREED

The Panel noted the report.

9. Executive Decision

The Panel considered the following Executive Decisions taken since the last meeting:

- Appointment of LEA Governor to Stanground St Johns Primary School
- Appointment of LEA Governor to Paston Ridings Primary School
- Appointment of LEA Governor to Matley Primary School
- Quality & Access for All Young Children- Three Year Allocation of Early Years Capital Grant
- Appointment of LEA Governor - Nene Valley Primary School
- Appointment of LEA Governor - Matley Primary School
- Appointment of LEA Governor - Dogsthorpe Infants School
- Appointment of LEA Governor - Eyrescroft Primary School

ACTION AGREED

The Panel noted the report.

10. Forward Plan of Key Decisions

The Panel received the latest version of the Council's Forward Plan, containing key decisions that the Leader of the Council anticipated the Cabinet or individual Cabinet Members would make during the course of the following four months. Members were invited to comment on the Plan and, where appropriate, identify any relevant areas for inclusion in the Panel's work programme.

ACTION AGREED

The Panel noted the Forward Plan and agreed that a briefing note be circulated to members on the Peterborough Substance Misuse Treatment Plans.

The meeting began at 7pm and ended at 8.20pm

CHAIRMAN

CREATING OPPORTUNITIES AND TACKLING INEQUALITIES SCRUTINY PANEL	Agenda Item No. 5
21 JULY 2009	Public Report

Report of the Director of Children's Services

Report Author – Jenni Hepworth
Contact Details – 01733 863957

16 TO 18 YEAR OLDS NOT IN EDUCATION, TRAINING OR EMPLOYMENT (NEET)

1. PURPOSE

To update the scrutiny committee on the rising numbers of young people Not in Education, Employment or Training (NEET) in Peterborough and associated plans to reduce this number.

2. RECOMMENDATIONS

That committee members consider the report and offer support to intervention activities to reduce NEET where appropriate.

3. LINKS TO CORPORATE PLAN, SUSTAINABLE COMMUNITY STRATEGY AND LOCAL AREA AGREEMENT

The reduction of young people not in education, employment or training (NEET) is a critical national indicator (NI117) in the Local Area Agreement.

4. BACKGROUND

The Young People's Service delivers connexions services within Peterborough to meet the following statutory responsibilities:

- Under Section 8 of the Employment and Training Act 1973 (amended by the Trade Union and Reform and Employment Rights Act 1993) to provide a careers service for young people, including careers information, advice and guidance and support to find suitable employment and training
- Under Section 114 of the Learning and Skills Act 2000 to provide support to young people to encourage and enable their participation in education or training
- Under Section 139 of the Learning and Skills Act 2000, to carry out an assessment for young people with learning difficulties and/or disabilities to assist their transition into post 16 education and training opportunities
- The 14-19 Implementation Plan (2005) made a commitment of offer, by the end of September, a suitable place in post 16 learning to all young people leaving compulsory education. This is known as the September Guarantee. This year the September Guarantee has been extended to all those who reached statutory school leaving age in 2008 and 2009. While these are shared responsibilities, Connexions Service providers are responsible for tracking offers made and supporting young people who have not received an offer.

5. KEY ISSUES

Key national indicators around NEET (young people not in education, employment or training) that sit with the Young People's Service are:

- NI 91 – increase the % of 17 year olds in learning. The target for 2009/10 is 87%, based on the average performance across November 09 to January 10. As of June 09, 84% of 17 year olds are in learning
- NI 117 – reduce the % of 16-18 year olds who are not in education, employment or training (NEET). The target for 09/10 is 7.5%, based on the average performance across November 2009 – January 2010. This local authority target was based on a planned reduction of 2 % points by 2010.
- Linked to these national indicators is the measure of the % of young people who are in a ‘not known’ situation.

While connexions service providers have specific responsibilities for NEET targets, NEET is a shared responsibility that forms a key part of strategies and planning locally, both through the Achieving Economic Well-Being Outcome Group (within the Children’s Trust Partnership Board structure) and through the 14-19 Education Plan.

5.1 Performance on reducing NEETs

5.1.1 Annual targets:

	Nov 06	Nov 07	Nov 08 – Jan 09	Nov 09 – Jan 10	Current situation June 09
% 16-18 NEET	9.2%	8.4%	9.1%	Target 7.5%	10.1%
Not known	2.7%	2.5%	2.5%	Target 2%	1.8%
17 year olds in learning	-	-	82.9%	Target 87%	84%

5.1.2 Comparative data for Nov 2008 – Jan 2009:

	England average	East of England average	Peterborough	Peterborough target
% 16-18 NEET	6.7%	6.2%	9.1%	8.5%

5.1.3 Position at the end of May 2009:

	National average	East of England average	Peterborough
% 16-18 NEET	7.3%	6.7%	9.7%

Source: (NCCIS data, verified by DCSF) Comparative data for June will not be available until August.

The attached data (monitoring NEET target) shows the annual highs and low of NEET levels, which reflect the academic year. Figures usually increase from August as young people leave statutory education and levels fall again as young people move into new education, training or work situations through September and October.

Compared to the previous year, NEET levels started to rise in Peterborough from January 2009. The % change in Peterborough at the end of May 2009 was 15.5%, which is higher than the national and regional average change of 11.6%. The numbers of 16-18 year olds in employment has fallen significantly over the last 12 months. By the end of May 2009, Peterborough saw a minus 20% change in numbers in employment, the same as the East of England average but above the national average of minus 18%.

As NEET levels continue to rise above the expected rate for the time of year, this suggests that meeting this year’s target of 7.5% will be even more challenging than anticipated.

6. IMPLICATIONS

The following data aims to give an insight into the characteristics of the 'NEET group' in Peterborough, and is taken from the monthly Connexions Management Information summary and NCCIS data (drawn from the Connexions Client Information System – CCIS) managed through the Young People's Service.

6.1 Figures behind the %s

- As at the end of June 2009, 509 16-18 year olds in Peterborough are NEET. This represents an increase of 77 young people from June 08. Of these 509, 414 (81%) are available for work or training. The other 19% are not currently available (mainly due to illness, pregnancy or being teenage parents).
- While the overall % of 16-18 year olds in learning has increased slightly from 79% in June 2008 to 80.3% in June 2009, the overall % of young people in education, employment and training has fallen from 89.6% to 88.2%. There are 176 fewer young people in employment (both with and without training) than this time last year, reflecting the impact of the economic downturn that is affecting all people of working age.

Gender

- Slightly more young males than females are NEET (51% of NEET group is male, 49% female)
- Significantly more males than females are available for and actively seeking work or training (62% of this group is male, 38% female). This reflects the 66 young women who are currently pregnant or teenage parents in Peterborough

Geographical spread

- Monthly data is available on NEET levels at ward level across Peterborough.
- The highest pockets of NEET are in Orton Longueville (64 young people), Central (48 young people), Bretton North (46 young people) and Dogsthorpe (45 young people).

Ethnicity

The ethnic breakdown of the NEET group broadly mirrors the overall ethnic make up of young people

	% white British	% other white	% Pakistani	% ethnicity not recorded
All YP 16-19	63%	7%	7%	14%
Overall EET	61%	8%	7%	16%
Full time education	55%	6%	8%	20%
Employed	76%	8%	6%	5%
Employed no training	74%	8%	7%	2%
Training course	68%	6%	8%	12%
NEET	75%	8%	7%	2%
Not known	67%	8%	6%	8%

- all other ethnic groups (based on DCSF groupings) represent 1% or less of cohort and of activity groups
- relatively high numbers of data not recorded in full time education reflects the targeted support for those young people looking for work/training and/or at risk of becoming NEET
- The accuracy of the data is affected by the % where no ethnicity is recorded, but overall the figures suggest that young people who are White British/White other are slightly over-represented in NEET and in employment.

6.2 Young people facing additional barriers

It is widely recognised that young people from particular groups are at risk of becoming NEET, and local data bears this out:

- on average 1 in 10 young people over school leaving age is NEET in Peterborough
- 2.5 in 10 young people with learning difficulties and disabilities are NEET
- 3 in 10 young people who are looked after/ care leavers are NEET
- 3 in 10 young people who attended alternative provision pre 16 are NEET
- 5.5 in 10 young people who've been involved with the Youth Offending Service are NEET
- 7 in 10 teenage mothers are NEET
- 64% of the NEET group have qualifications below level 2 (equivalent to below 5 GCSEs A-C).

7. CONSULTATION

The tracking and analysis of NEET data, performance and intervention to improve performance all form key agenda matters at the Achieve Economic Well-Being Partnership Group and therefore is regularly fed into the Children's Trust Partnership Board for consideration.

8. EXPECTED OUTCOMES

8.1 What we are already doing

- The Young People's Service continues to focus resources on work to prevent education leavers becoming NEET, and to target resources to track and to support those who are NEET, and to enable them to access suitable opportunities and provision. We work in close partnership with a range of services and organisations around these strands. Current work includes:
- on-going tracking of every NEET young person to check if they are still looking for work and to offer support
- range of information, advice and guidance services, including specialist careers guidance, support with job search skills and access to hardship benefits, to personal development opportunities (such as the Princes Trust Team Programme), and support to access job and training vacancies. Over the last year, around 7000 young people, many of whom were NEET, have visited the Youth Access Point in the Central library. Connexions Information Advisers offer front line support, information and advice to these young people, together with duty Personal Advisers providing careers guidance and in-depth support for those young people in crisis due to homelessness, financial hardship or other issues
- Under 18 Adviser from Job Centre Plus works 2 days a week from the Youth Access Point, making it easier for young people in financial hardship to access benefits and supporting more young people onto training courses as a first step towards work
- Intensive Personal Advisers work with a small caseload of young people who are facing multiple barriers, both to move into and then to sustain a place in college, training or work
- early identification with schools of Year 11 and Year 12 leavers who are at risk of becoming NEET
- liaising with partner services (including Youth Offending Service, Teenage Pregnancy support, Children in Care teams, Attendance Service and Inclusion Officers) to identify school leavers from vulnerable groups and offering careers information, advice and guidance to support them to make plans for once they finish education
- targeting school leaver follow up on those who are still undecided about their plans, whose plans are not known, and who are looking for work and training
- targeted support and provision for Year 11 leavers at risk of becoming NEET, including early access to ESF funded programmes and activity programmes such as U Project
- a range of partners is planning a NEET activity week in early September, launched by interactive stands in Queensgate on Saturday 5th September to engage NEET young

people and their parents and give them tasters of education, training and volunteering opportunities on offer and involve employers in advising young people on the skills they are looking for

- engaging staff in reflecting on and suggesting improvements to Young People's Service work with NEET young people – their suggestions are now being taken forward
- multi-agency Targeted Learner Needs Group continues to monitor trends and needs locally and feed information through to the 14-19 Planning Group on approaches to identifying gaps and broadening the range of provision available

8.2 What we plan to do

- develop a Peterborough NEET Strategy by early September, with involvement from all key stakeholders
- run training in conjunction with Job Centre Plus to raise awareness of and support early access for 18 year olds to Flexible New Deal
- review young people's vacancy service (currently provided through a Service Level Agreement with Cambridgeshire County Council) and implement a locally focussed service to support more young people into work and training
- develop close links with the newly formed National Apprenticeship Service to raise awareness of and access to the new Vacancy Matching Service for apprenticeships
- contribute to the implementation of the Future Jobs Fund programme in the city
- continue to strengthen and improve internal systems to track and support NEET young people
- through a new young people's website, promote the full range of positive activities to young people, including targeted marketing to NEET young people
- develop additional personal development opportunities through youth work provision targeted on NEET young people and help them on the journey towards education, employment and training by gaining informal qualifications and broader life skills

9. NEXT STEPS

Return to the scrutiny committee for monitoring of progress in February 2010 – following performance information on the annual target – measured as an average across November, December and January.

10. BACKGROUND DOCUMENTS

All data tables and comparators have been drawn utilising current data from the Connexions Client Information System (CCIS)

This page is intentionally left blank

CREATING OPPORTUNITIES AND TACKLING INEQUALITIES SCRUTINY COMMITTEE	Agenda Item No. 6
21 JULY 2009	Public Report

REPORT OF THE DIRECTOR OF CHILDREN'S SERVICES

Report Authors: Denise Radley; Maureen Phillips; John Richards

Contact Details: 01733 863601

SERVICES FOR ADULTS AND CHILDREN WITH DISABILITIES

1. PURPOSE

To set out a position statement relating to adults and children's services for those with disabilities; to highlight some of the plans for those services; to propose some scrutiny topics for the next year and to suggest some scrutiny methods.

2. RECOMMENDATIONS

Members to agree the scrutiny topics which they wish to scrutinise over the next year

3. LINKS TO CORPORATE PLAN, SUSTAINABLE COMMUNITY STRATEGY AND LOCAL AREA AGREEMENT

The work highlighted within this report directly contributes to the Creating Opportunities, Tackling Inequalities outcome of 'Supporting Vulnerable People' within the Local Area Agreement.

4. A POSITION STATEMENT – ADULTS AND CHILDREN

4.1 Adults

4.1.1 Learning Disabilities

Learning disability is the most common form of disability in Britain affecting around 1.2 million people. It is estimated that there are 339 people in the Peterborough resident population aged 15-64 with profound learning disability, and a further 3803 with mild to moderate learning disability.

Some people live relatively independently, hold down jobs and have busy social lives. At the other extreme, where people have profound and multiple disabilities, round-the-clock support is necessary.

Service users, parents, carers and the voluntary sector make up most of the membership of our Learning Disability Partnership Board which has led the development of the learning disability strategy. (See appendix 1 for details of service provision)

4.1.2 Physical Disabilities

A register is kept of people with sensory impairments and 388 people with sensory impairments were supported by community based social care services in 2008, covering 26.1% of those registered.

There has been an increase in the number of people with a physical disability receiving community care services to support them to live at home. Adults with a physical disability have been proactive in taking direct payments and it is anticipated that there will be a similar demand for individual budgets. (See appendix 1 for details of service provision)

4.2 Children

There is no single data source to reliably identify the number of disabled children in Peterborough. Data is collated from health, early years, and special educational needs data sources. It is estimated therefore that there are just over 1,800 disabled children and young people in Peterborough as follows: -

Age band	Number
0-5	605
5-16	1,017
Post-16	229
Total	1,851

Total 0-19 population	40,386
% with disability	4.6%

5. SOME KEY FINDINGS AND PLANS

5.1 Adults

In 2005, an inspection of services for adults with learning disabilities in Peterborough was undertaken by the Commission for Social Care Inspection (CSCI). The inspection indicated that further work was required in the following areas:

- Person centred planning
- Independent and self-advocacy
- Uptake of self-directed support
- Service users living with elderly relatives
- Transitions.

5.1.1 Strategic Plan Goals

A. To enable inclusion for those with **learning disabilities**:

1. Utilise the review of all out of area placements to:
 - Scope current service gaps to ensure effective commissioning of services with SCG or locally dependent on need and market availability of accredited providers
 - Identify those who are suitable to return to area
 - Undertake advocacy and person centred planning with those not yet ready to return.
2. Improve availability of information in accessible and user friendly formats
3. To work jointly with housing associations, private sector, and shared ownership to commission a full range of tenures, including:
 - Live alone (independent / supported living)
 - Live with family
 - Live in a house or flat with others

- Live in cluster housing – when a group of people live near each other, in the same neighbourhood, street, or block of flats.
4. To increase the number of people with learning disabilities in paid and voluntary employment by working with our contractors, Job Centre Plus and other partners to
 - Raise expectations regarding work, especially in schools and colleges
 - Develop partnership working with educational establishments via the transitions strategy group. Ensure transitions toolkit, which will include individual's future employment options, is completed for year 9 pupils with learning disabilities at their review from September 2009
 - Liaise with organisations we contract and work with to raise awareness of and create employment opportunities.

B. To ensure modern and responsive services are provided for people with disabilities

- 1) Work with GPP to ensure improved physical facilities for people with a disability
- 2) Review sensory support services to ensure service is aligned to client needs
- 3) Establish a rehabilitation worker for visually impaired people, giving support with mobility skills, daily living skills and communication
- 4) Work with Independent Living Support Services to develop the market following a review of the gaps and development needs identified by service users
- 5) Facilitate the establishment of a 'user-led' organisation through the further development of the Peterborough Disability Forum to represent disabled people
- 6) Ensure optimal access to the new capacity within the City Care Centre to provide intensive rehabilitation for adults with a disability in the bedded and day care areas.

5.2 Children

There is a new national indicator measured by a survey of parents with disability. All local authorities who have included this indicator in their local area agreement participated in the first survey in March 2009, the results of which provide the national benchmark for performance against which improvement will be measured. The scores are for the percentage of parents who express satisfaction with services in the following respects: -

- Provision of information
- Assessment of need
- Transparency
- Participation
- Feedback

The scores for each area are aggregated to give an overall score. The national benchmark is 59% satisfaction rate and Peterborough's performance at 60% very much reflects the national average picture and is broken down as follows: -

	Health	Education	Social care
Information	64	69	61
Assessment	76	82	62
Transparency	95	89	86

Participation	60	50	52
Feedback	16	19	16

5.2.1 The plan to integrate services for children with disabilities

Integrating services for disabled children provided by health, and the different divisions within children's services (Learning and Skills, Social Care, Family and Communities) is part of the 'Every Child Matters' agenda to ensure that children and families receive a co-ordinated assessment of need and appropriate services to meet those needs. Avoiding duplication of assessment and providing clear pathways for children and families to access universal, targeted and specialist services are key elements of integrated service delivery. For disabled children, this means ensuring that they and their carers are provided with support to remain at home; to be able to access universal services such as community leisure facilities and extended schools; that there are targeted services specifically designed to meet moderate levels of need and that there are highly specialist and well coordinated services to meet complex needs of children with profound disabilities.

A project to integrate services for children with disabilities has been established by the children's trust partnership board, managed within children's services and was the subject of a report to Children and Lifelong Learning Scrutiny Panel on 4th March 2009. An interim service manager has been appointed who has additional capacity being provided through a small team from the Voluntary Sector Forum. A shadow Management Board is in place. (See Appendix 2)

5.2.2 Further plans

Consultation with parents confirmed that the key elements of the commissioning strategy highlighted in the previous scrutiny report are very much what they wanted to see. The appointment of the Aiming High Commissioning Officer therefore enables the city council to accelerate progress in all areas: -

- a. Increasing information, advice and guidance to parents
- b. Supporting access to universal provision through: -
 - o Additional care support to access mainstream facilities;
 - o Developing extended services and holiday schemes to increase access to disabled children;
 - o Grants to voluntary sector providers to improve access for disabled children;
 - o Improving transport access to overnight short breaks and universal leisure activities/extended services;
 - o Increasing direct payments and providing appropriate support to parents to use the scheme;
 - o Increased domiciliary care services;
 - o Improving the availability of aids and equipment to support short breaks;
 - o Increasing occupational therapy capacity to provide appropriate assessment for short break provision;
 - o Reviewing the capacity of the short breaks fostering service following the residential respite review;
 - o Prioritising allocation of capital to enable disabled children to access mainstream play, leisure and sports facilities.

6. POSSIBLE AREAS OF SCRUTINY

6.1 Adults

1. User-led organisations – “Putting People First” the national concordat on adult social care requires all areas to have at least one user-led organisation in place by 2011. In Peterborough we have supported and funded the development of the Disability Forum which it is hoped will become the key user-led organisation for the city. Currently the Forum is being hosted by DIAL, an established local charity. A full-time Forum Worker is now in post to take forward the development. The Committee could add value by examining progress to date in the context of the national and local requirements and needs and testing how the Forum could be most effective in its role. Clearly this would require the agreement of the Forum itself which it is recommended is contacted directly by the Committee should this be an area of focus. This approach would indicate a commitment to hearing the voices of disabled people in Peterborough and to supporting truly user-led services and enabling people to take more control over their lives and have much more say in local decisions.
2. Self-directed support – adult social care will be transformed by the introduction of Individual Budgets which will bring about much more choice and control for people who use services. The system is designed to be more transparent and fairer in terms of how resources are allocated. It also aims to enable individuals to take control over their money or services and be creative in meeting their own needs. We started to implement this in January 2009 so Scrutiny would add to the evaluation of progress and provide challenge to the programme delivery as this is a key target in Peterborough’s Local Area Agreement.
3. Carers including young carers – a new national strategy has led to a new local strategy for carers in Peterborough and this is about to be finalised. A new Carers’ Partnership Board is in place with an ex-carer as a co-chair. Performance on the carers’ indicator has recently improved considerably and there are new services in place such as the emergency support register. Feedback suggests that support for parent carers needs to be improved. Scrutiny could add value to the implementation of the new strategy. A collaboration between the new Carers’ Partnership Board and the Scrutiny Committee could be an exciting venture,
4. Disabled parents with disabled children – in some families one or both parents and one or more children have disabilities. These cases are often extremely complex with several service users of children’s and adult’s services plus several people who may consider themselves carers. There is potential for difficulties between agencies working with the family (children’s services, adult social care and health services) and potential for confusion over who provides what and how to get help. A focused piece of work specifically looking at these families would be ground-breaking and could feed into the agenda around prevention and whole family working.

6.2 Children

5. Although parental satisfaction in Peterborough appears to be similar to the national average, we do know that many children with moderate disabilities are not currently accessing services. Increasing awareness of services, therefore, is likely to reduce parental satisfaction initially until we have sufficient capacity developed to respond to the full range of need. Central to parental satisfaction is the ability of children with disability and their families to access mainstream community and leisure facilities. Simple issues such as accessing toilets become enormous barriers to normal family life. Public toilets which have changing facilities for older disabled children are rare. As a result of parental consultation, however, the need for such a facility in the city centre has been identified and is being taken forward within the Cathedral Square development.

Parental engagement with elected members is therefore crucial to effective scrutiny of services.

6. The development of the integrated service is being taken forward in partnership with Peterborough Community Services within the departmental transformation programme 'delivering through localities'. Within the most recent consultation document, it is proposed that services to disabled children will be brought together as a natural alliance and located with special educational needs in the learning and skills portfolio. The progress towards a fully integrated service is also an area for scrutiny.
7. Supporting transition into adulthood is a key aspect of the Aiming High programme. Although we are able to report that 100% of disabled children have a transition plan at 14+, there is a considerable amount of work required to develop holistic services which support young people into adulthood and independence.

7. SCRUTINY METHODS

It has been proposed that the scrutiny committee will focus on services for both adults and children with disabilities over the next year. This will allow an in-depth consideration of all or any of the scrutiny topics listed above. It also enables a unique opportunity for Members to engage in a range of scrutiny activities:

- Examination of policies and strategies
- Survey and questionnaire development and analysis
- Focus group sessions
- Shadowing staff
- Meetings with, and visits to provider organisations
- Discussions with individual adults and children
- Overseeing a debate
- Organising a seminar to set out the findings

8. DOCUMENTS REFERRED TO IN THE TEXT

Aiming High for Disabled Children: Short Breaks Implementation Guide. DCSF and DH July 2008

Healthy Lives, Brighter Futures. The strategy for children and young people's health. A commitment from The Children's Plan. DCSF and DH February 2009 (Chapter 6 Services for children with acute or additional health needs)

NHS Peterborough has a specialist Community Team for People with Learning Disabilities. People with physical disabilities are supported by the locality teams which cover older people and those with disabilities aged under 65. There is also a small specialist team for people with sensory needs.

Key services for people with learning disabilities include:

- Employment and education support services are provided by Westcombe employment services via Peterborough community services and support people into employment and education, they also develop a directory of available courses annually
- Peterborough Council for Voluntary Services is commissioned to provide Advocacy – this is either group, case work or specific BME.
- Person centred planning is provided through circles
- Carer development worker works closely with and support parent/carers
- Transitions work stream is multi-agency partnership working that assist young people through the transition between children and adult services.
- An accommodation manager liaises with both service users and providers to ensure appropriate accommodation is provided locally.
- Service user and social care representatives provide an invaluable service in providing support and training to primary care staff on how to work with people with learning disabilities. Part of this work has led to a number of people have personal accessible Health action plans
- The Network team is supported by Peterborough Council for Voluntary Services and empowers and supports individuals in a group setting to express their views, ideas about their lives and the services they encounter. This group also has a key role within the Learning disability partnership board.
- There are a number of Supported living schemes that enable people to live and independent but supported live.
- Individual budgets and Direct payments have enabled a number of people to access a number of services including accessing leisure and community activities in a supported and safe way
- Lava lamp is a social event that has evolved from the Network team. This provides people with learning disabilities the opportunity to socialise with their peers in a safe and supported environment.

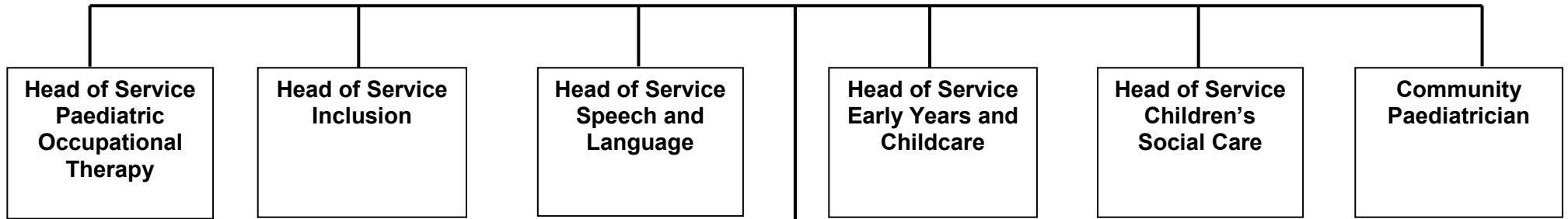
Key services for people with physical disabilities include:

- Care at home/community care including care management from a care support worker and social work support.
- Specialist assessments.
- Rehabilitation through specialist rehabilitation workers.
- Equipment including assessment, provision, training and repair.
- Information guidance and support to raise awareness.
- Specialist support for mobility skills, daily living skills, communication.

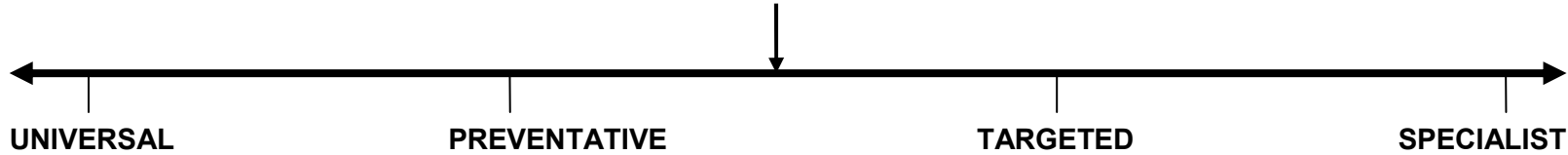
Services commissioned from voluntary and community providers include:

- Communication support groups.
- Co-ordination of peer to peer support groups.
- Drop in services.
- Social inclusion activities.
- Advocacy.
- Disability information and advice services including help to fill in forms, provide benefits checks, liaise with other agencies.

Joint Chair
Assistant Director Family and Communities and Assistant Director Children's Community Health Services



CONTINUUM OF SERVICE DELIVERY
(SEAMLESS SERVICE)
POOLED BUDGETS WHEREVER POSSIBLE



Example:
Children living at home using universal services

Example:
Children in 24 hour 52 week care



Threshold & trigger points

Threshold & trigger points

Threshold & trigger points

CREATING OPPORTUNITIES AND TACKLING INEQUALITIES SCRUTINY COMMITTEE	Agenda Item No. 7
21 JULY 2009	Public Report

Report of the Solicitor to the Council

Report Author – Paulina Ford, Performance Scrutiny and Research Officer

Contact Details – 01733 452508 or email paulina.ford@peterborough.gov.uk

FORWARD PLAN – 1 JULY 2009 to 31 OCTOBER 2009

1. PURPOSE

- 1.1 This is a regular report to the Creating Opportunities and Tackling Inequalities Scrutiny Committee outlining the content of the Council's Forward Plan.

2. RECOMMENDATIONS

- 2.1 That the Committee identifies any relevant items for inclusion within their work programme.

3. BACKGROUND

- 3.1 The latest version of the Forward Plan is attached at Appendix 1. The Plan contains those key decisions, which the Leader of the Council believes that the Cabinet or individual Cabinet Member(s) will be making over the next four months.
- 3.2 The information in the Forward Plan provides the Committee with the opportunity of considering whether it wishes to seek to influence any of these key decisions, or to request further information.
- 3.3 If the Committee wished to examine any of the key decisions, consideration would need to be given as to how this could be accommodated within the work programme.

4. CONSULTATION

- 4.1 Details of any consultation on individual decisions are contained within the Forward Plan.

5. BACKGROUND DOCUMENTS

Used to prepare this report, in accordance with the Local Government (Access to Information) Act 1985

None

6. APPENDICES

Appendix 1 – Forward Plan of Executive Decisions

This page is intentionally left blank

PETERBOROUGH CITY COUNCIL'S FORWARD PLAN

1 JULY 2009 TO 31 OCTOBER 2009

APPENDIX 1



FORWARD PLAN OF KEY DECISIONS – 1 JULY 2009 TO 31 OCTOBER 2009

During the period from 1 July 2009 to 31 October 2009 Peterborough City Council's Executive intends to take 'key decisions' on the issues set out below. Key decisions relate to those executive decisions which are likely to result in the Council spending or saving money in excess of £500,000 and/or have a significant impact on two or more wards in Peterborough.

This Forward Plan should be seen as an outline of the proposed decisions and it will be updated on a monthly basis. The dates detailed within the Plan are subject to change and those items amended or identified for decision more than one month in advance will be carried over to forthcoming plans. Each new plan supersedes the previous plan. Any questions on specific issues included on the Plan should be included on the form which appears at the back of the Plan and submitted to Lindsay Tomlinson, Senior Governance Officer, Chief Executive's Department, Town Hall, Bridge Street, PE1 1HG (fax 01733 452483). Alternatively, you can submit your views via e-mail to lindsay.tomlinson@peterborough.gov.uk or by telephone on 01733 452238.

The Council invites members of the public to attend any of the meetings at which these decisions will be discussed and the papers listed on the Plan can be viewed free of charge although there will be a postage and photocopying charge for any copies made. All decisions will be posted on the Council's website: www.peterborough.gov.uk. If you wish to make comments or representations regarding the 'key decisions' outlined in this Plan, please submit them to the Senior Governance Officer using the form attached. For your information, the contact details for the Council's various service departments are incorporated within this plan.

NEW ITEMS THIS MONTH:

- Review of Council Subsidised Bus Services
- Leisure and Culture Trust
- Cash Collection and Key Holding Services
- Stationery Contract
- Furniture Contract

JULY - KEY DECISIONS

KEY DECISION REQUIRED	DATE OF DECISION	DECISION MAKER	CONSULTATION	CONTACT DETAILS / REPORT AUTHORS	REPORTS
<p>Review of Council Subsidised Bus Services</p> <p>To approve:</p> <ul style="list-style-type: none"> • Cessation of operation of some services • Retender of some services <p>To undertake a further review to identify further savings and give delegated authority to the Executive Director, Operations to authorise the cessation of subsidised and operation of any services following the review</p>	July 2009	Cabinet	Monitoring of passenger numbers and bus services has been undertaken. All ward councillors will be consulted along with employees and trade unions as appropriate.	<p>Teresa Wood Group Manager – Accessibility and Travel Tel: 01733 317451 teresa.wood@peterborough.gov.uk</p>	Public report will be available from the Governance team one week before the decision is made

<p>Leisure and Culture Trust To give authority to commence the process of establishing a not-for-profit distributing organisation (a 'trust') to deliver a range of cultural services, and subject to the successful creation of the trust, to authorise the Chief Executive, in consultation with the Cabinet Member for Environment Capital and Culture and other officers as appropriate, to enter into a legal agreement with the trust to deliver the services</p>	<p>July 2009</p>	<p>Cabinet</p>	<p>Consultation will be undertaken with relevant stakeholders as appropriate</p>	<p>Kevin Tighe Head of Culture Tel: 01733 863784 kevin.tighe@peterborough.gov.uk</p>	<p>Public report will be available from the Governance team one week before the decision is made</p>
<p>Growth Area Bids To delegate to the Chief Executive the authority to bid for sites which become available, within the area covered by the City Centre Area Action Plan, or sites which are otherwise considered necessary for the Council to achieve its Growth agenda.</p>	<p>July 2009</p>	<p>Leader of the Council, Councillor Cereste</p>	<p>Internal departments and relevant stakeholders as appropriate plus ward members</p>	<p>Gillian Beasley Chief Executive Tel: 01733 452390 gillian.beasley@peterborough.gov.uk</p>	<p>Public report will be available from the Governance team one week before the decision is made</p>
<p>Arthur Mellows Village College Gym and Innovation Centre Authority to award the contract for the construction of the gym and innovation centre at AMVC</p>	<p>July 2009</p>	<p>Leader of the Council, Councillor Cereste</p>	<p>Ward councillors and relevant stakeholders</p>	<p>Isabel Clark Planning and Development Manager Tel: 01733 863914 isabel.clark@peterborough.gov.uk</p>	<p>Public report will be available from the Governance team one week before the decision is made</p>

<p>Midland Highway Alliance - Junction 8 Roundabout Improvements and Welland Road Traffic Mitigation Projects To appoint a contractor for the works</p>	<p>July 2009</p>	<p>Cabinet Member for Neighbourhood, Housing and Community Development, Councillor Hiller</p>	<p>Internal stakeholders as appropriate</p>	<p>Stuart Mounfield Senior Engineer Tel: 01733 453598 stuart.mounfield@peterborough.gov.uk</p>	<p>Public report will be available from the Governance team one week before the decision is made</p>
<p>Proposed Bushfield Academy – Procurement Processes To approve processes and delegations for the procurement of the new Bushfield Academy in accordance with Partnerships for Schools guidance</p>	<p>July 2009</p>	<p>Cabinet Member for Education, Skills and University, Councillor Holdich</p>	<p>Consultation will be undertaken with the Cabinet Member for Resources, local ward councillors and internal departments as appropriate</p>	<p>Brian Howard Secondary Schools Phase 2 Project Manager Tel: 01733 863976 brian.howard@peterborough.gov.uk</p>	<p>Public report will be available from the Governance team one week before the decision is made</p>
<p>Joint Service Centre at Hampton To commence the procurement process for a design and build contract for the provision of new leisure and library facilities at Hampton as part of the joint service centre in partnership with NHS Peterborough.</p>	<p>July 2009</p>	<p>Cabinet Member for Environment Capital and Culture, Councillor Lee</p>	<p>Consultation will take place with the Cabinet Member for Community Services, ward councillors, affected internal divisions within PCC and potential user groups in Hampton.</p>	<p>Fiona O'Mahony Project Director JSC Hampton Tel: 01733 863856 fiona.o'mahony@peterborough.gov.uk</p>	<p>Public report will be available from the Governance team one week before the decision is made</p>

<p>Thorney and Eye Children's Centre To give authority to award the contract for the construction of Eye and Thorney Children's Centre</p>	<p>July 2009</p>	<p>Cabinet Member for Children's Services, Councillor Scott</p>	<p>Consultation will be undertaken with local stakeholders including local schools and governing bodies, voluntary sector childcare providers and private childcare providers in Eye and with ward councillors.</p>	<p>Pam Setterfield Assistant Head of Children and Families Services Tel: 01733 863897 pam.setterfield@peterborough.gov.uk</p>	<p>Public report will be available from the Governance team one week before the decision is made</p>
<p>Lady Lodge Arts Centre Options for the future use of the Lady Lodge Arts Centre site</p>	<p>July 2009</p>	<p>Cabinet Member for Resources, Councillor Seaton</p>	<p>Consultation will be carried out with relevant ward councillors</p>	<p>Andrew Edwards Head of Strategic Property Tel: 01733 384530 andrew.edwards@peterborough.gov.uk</p>	<p>Public report will be available from the Governance team one week before the decision is made</p>
<p>Legal Chambers Service To approve the re-tendering for the provision of external legal services</p>	<p>July 2009</p>	<p>Cabinet Member for Resources, Councillor Seaton</p>	<p>Consultation will take place with all internal stakeholders as appropriate</p>	<p>Lisa Osborne Project Manager Tel: 01733 452276 lisa.osborne@peterborough.gov.uk</p>	<p>Public report will be available from the Governance team one week before the decision is made</p>
<p>Debt Collection To give authority to award the contract for the authority's debt collection</p>	<p>July 2009</p>	<p>Cabinet Member for Resources, Councillor Seaton</p>	<p>Consultation will be undertaken with relevant departments.</p>	<p>Helen Edwards Solicitor to the Council Tel: 01733 452539 helen.edwards@peterborough.gov.uk</p>	<p>Public report will be available from the Governance team one week before the decision is made</p>

<p>Sale of Surplus Former Allotment Land at Westwood Grange (South of Atherstone Avenue and Portman Close, West of Grange Road and North of Mayors Walk, Peterborough) To authorise the Chief Executive, Executive Director of Resources and Cabinet Member for Efficiency and Business Improvement to negotiate and conclude the sale of this surplus Council asset based on best consideration principles.</p>	<p>July 2009</p>	<p>Cabinet Member for Resources, Councillor Seaton</p>	<p>Consultation will take place with relevant stakeholders including ward councillors</p>	<p>Andrew Edwards Head of Strategic Property Tel: 01733 384530 andrew.edwards@peterborough.gov.uk</p>	<p>Public report will be available from the Governance team one week before the decision is made</p>
<p>Sale of Surplus Former Allotment Land off Itter Crescent To authorise the Chief Executive, in consultation with the Solicitor to the Council, Executive Director Resources, Head of Strategic Property and the Cabinet Member for Efficiency and Business Improvement, to negotiate and conclude the sale of surplus land at Itter Crescent</p>	<p>July 2009</p>	<p>Cabinet Member for Resources, Councillor Seaton</p>	<p>Consultation will take place with the Cabinet Member, Ward councillors, relevant internal departments & external stakeholders as appropriate</p>	<p>Andrew Edwards Head of Strategic Property Tel: 01733 384530 andrew.edwards@peterborough.gov.uk</p>	<p>Public report will be available from the Governance team one week before the decision is made</p>

<p>Sale of Surplus Land at Matley Road, Orton Brimbles To negotiate and conclude terms for the disposal of this asset by private treaty.</p>	<p>July 2009</p>	<p>Cabinet Member for Resources, Councillor Seaton</p>	<p>Consultation will take place with relevant ward councillors</p>	<p>Richard Hodgson Head of Strategic Projects Tel: 01733 742230 richard.hodgson@peterborough.gov.uk</p>	<p>Public report will be available from the Governance team one week before the decision is made</p>
<p>Sale of Surplus Land and Buildings at Peterborough Professional Development Centre (PPDC), Cottesmore Close, Netherton, Peterborough To negotiate and conclude terms for the disposal of this asset by private treaty</p>	<p>July 2009</p>	<p>Cabinet Member for Resources, Councillor Seaton</p>	<p>Consultation will take place with relevant ward councillors</p>	<p>Richard Hodgson Head of Strategic Projects Tel: 01733 742230 richard.hodgson@peterborough.gov.uk</p>	<p>Public report will be available from the Governance team one week before the decision is made</p>
<p>ICT Managed Service To select a partner to deliver ICT services to the Council</p>	<p>July 2009</p>	<p>Cabinet Member for Resources, Councillor Seaton</p>	<p>Internal stakeholders as appropriate: ICT staff, HR; Finance; Legal Services; Departmental Representatives</p>	<p>Elaine Alexander Programme Manager – Business Transformation Tel: 01733 317984 elaine.alexander@peterborough.gov.uk</p>	<p>Public report will be available from the Governance team one week before the decision is made</p>
<p>Cash Collection and Key Holding Services Authorisation of extension to the current contract for cash collection and key holding services until March 2010</p>	<p>July 2009</p>	<p>Cabinet Member for Resources, Councillor Seaton</p>	<p>Consultation is being undertaken with all stakeholders as appropriate</p>	<p>Lisa Osborne Category Manager Tel: 01733 452276 lisa.osborne@peterborough.gov.uk</p>	<p>Public report will be available from the Governance team one week before the decision is made</p>

AUGUST - KEY DECISIONS

KEY DECISION REQUIRED	DATE OF DECISION	DECISION MAKER	CONSULTATION	CONTACT DETAILS / REPORT AUTHORS	REPORTS
<p>Real Time Passenger Information Partnership Agreement</p> <p>Authority to enter into a partnership agreement with Central Bedfordshire Council, Bedford Borough Council and Luton Borough Council to implement real time passenger information</p>	August 2009	<p>Cabinet Member for Neighbourhood, Housing and Community Development, Councillor Hiller</p>	<p>Consultation will be carried out with relevant internal departments as appropriate</p>	<p>Amy Wardell Team Manager, Passenger Transport Projects Tel: 01733 317481 amy.wardell@peterborough.gov.uk</p>	<p>Public report will be available from the Governance team one week before the decision is made</p>

SEPTEMBER - KEY DECISIONS

KEY DECISION REQUIRED	DATE OF DECISION	DECISION MAKER	CONSULTATION	CONTACT DETAILS / REPORT AUTHORS	REPORTS
Older People's Accommodation Strategy To agree the next phase of implementation of the Older People's Accommodation Strategy	September 2009	Cabinet	Consultation will be undertaken with relevant stakeholders as appropriate	Denise Radley Director of Adult Social Services and Performance Tel: 01733 758444 denise.radley@peterborough.gov.uk	Public report will be available from the Governance team one week before the decision is made
Extension to Woodston Primary School Authority to award the contract for the construction of an extension to Woodston Primary School	September 2009	Cabinet Member for Education, Skills and University, Councillor Holdich	Consultation will take place with relevant stakeholders, internal departments and ward councillors as appropriate	Isabel Clark Planning and Development Manager Tel: 01733 863914 isabel.clark@peterborough.gov.uk	Public report will be available from the Governance team one week before the decision is made
Extension to Hampton Hargate School Authority to award the contract for the construction of an extension to Hampton Hargate Primary School	September 2009	Cabinet Member for Education, Skills and University, Councillor Holdich	Consultation will take place with relevant stakeholders, internal departments and ward councillors as appropriate	Isabel Clark Planning and Development Manager Tel: 01733 863914 isabel.clark@peterborough.gov.uk	Public report will be available from the Governance team one week before the decision is made
Stationery Contract Authorisation to award the contract for stationery to the successful supplier following the procurement exercise	September 2009	Cabinet Member for Resources, Councillor Seaton	Consultation will be undertaken with Heads of Service and other users of the contract	Lisa Osborne Category Manager Tel: 01733 452276 lisa.osborne@peterborough.gov.uk	Public report will be available from the Governance team one week before the decision is made

<p>Furniture Contract Authorisation to award the contract for furniture to the successful supplier following the procurement exercise</p>	<p>September 2009</p>	<p>Cabinet Member for Resources, Councillor Seaton</p>	<p>Consultation will be undertaken with Heads of Service and other users of the contract</p>	<p>Lisa Osborne Category Manager Tel: 01733 452276 lisa.osborne@peterborough.gov.uk</p>	<p>Public report will be available from the Governance team one week before the decision is made</p>
---	-----------------------	---	--	--	--

OCTOBER - KEY DECISIONS

THERE ARE CURRENTLY NO DECISIONS SCHEDULED FOR OCTOBER

**CREATING OPPORTUNITIES AND TACKLING INEQUALITIES SCRUTINY COMMITTEE
WORK PROGRAMME 2009/10**

Meeting Date	Item	Progress
21 July 2009	16 to 18 year olds not in Education, Training or Employment (NEET) Services for Adults and Children with Disabilities	
15 September 2009	Performance Monitoring 2009/10 – Quarter 1 To consider and comment on the performance report for Quarter 1. Contact Officer: Jo Proud	
17 November 2009	Performance Monitoring 2009/10 – Quarter 2 To consider and comment on the performance report for Quarter 2 Contact Officer: Jo Proud	
19 January 2010	Performance Monitoring 2009/10 – Quarter 3 To consider and comment on the performance report for Quarter 3. Contact Officer: Jo Proud	
16 March 2010	Performance Monitoring 2009/10 – Quarter 4 To consider and comment on the performance report for Quarter 4 Contact Officer: Jo Proud	

Items to be programmed

Item	Progress

This page is intentionally left blank